

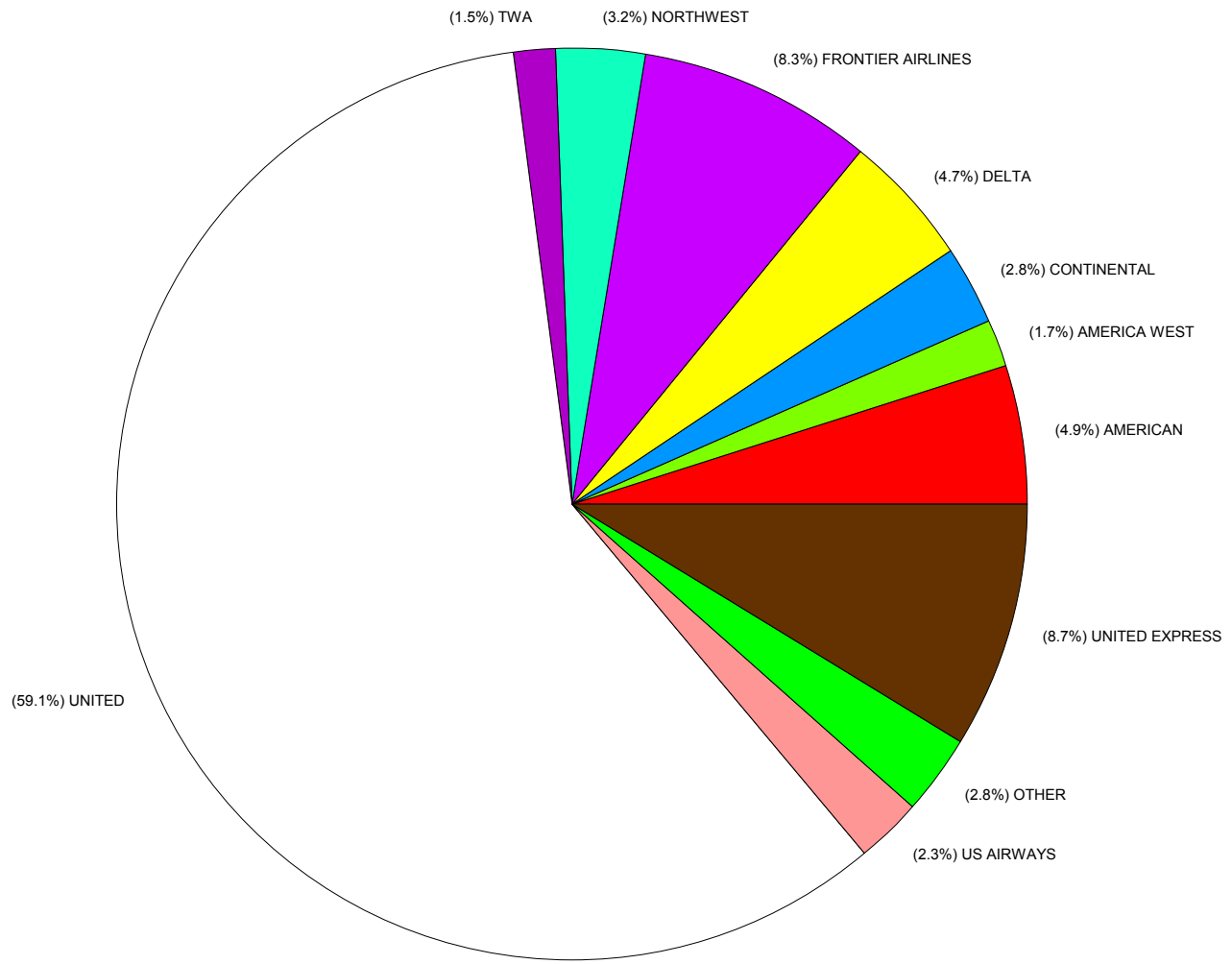
DENVER INTERNATIONAL AIRPORT
DOMESTIC MARKET SHARES
AUGUST 2001 VS. PREVIOUS MONTH AND PREVIOUS YEAR

AIRLINE	AUGUST 2001		JULY 2001		AUGUST 2000	
	REVENUE PASS. IN AND OUT (1)	MARKET SHARE	REVENUE PASS. MONTH AGO (1)	MARKET SHARE	REVENUE PASS. YEAR AGO (2)	MARKET SHARE
AIR WISCONSIN/UAX	206,770	5.87%	203,888	5.75%	196,689	6.01%
AMERICAN	173,298	4.92%	177,521	5.01%	169,668	5.18%
AMERICAN TRANS AIR	35,907	1.02%	37,881	1.07%	27,937	0.85%
AMERICA WEST	59,453	1.69%	61,873	1.75%	45,169	1.38%
BIG SKY AIRLINES	1,859	0.05%	1,835	0.05%	1,369	0.04%
CASINO	553	0.02%	174	0.00%	662	0.02%
CHAMPION AIR	8,903	0.25%	9,236	0.26%	8,739	0.27%
CONTINENTAL	97,960	2.78%	91,772	2.59%	87,624	2.68%
DELTA	165,258	4.69%	169,654	4.79%	194,171	5.93%
FRONTIER AIRLINES	293,312	8.33%	323,432	9.13%	283,501	8.66%
GREAT LAKES/UAX	70,391	2.00%	71,503	2.02%	65,448	2.00%
JET BLUE	8,782	0.25%	8,835	0.25%	0	0.00%
MESA	0	0.00%	0	0.00%	714	0.02%
MIAMI AIRLINES	154	0.00%	0	0.00%	114	0.00%
MIDWAY AIRLINES	8,092	0.23%	10,713	0.30%	0	0.00%
MIDWEST EXPRESS	9,461	0.27%	9,922	0.28%	9,569	0.29%
NORTHWEST	111,614	3.17%	112,627	3.18%	103,504	3.16%
SKYWEST/UAX	29,972	0.85%	29,684	0.84%	0	0.00%
SPORTS HAWK	150	0.00%	91	0.00%	0	0.00%
SUN COUNTRY	264	0.01%	334	0.01%	0	0.00%
TWA	51,831	1.47%	58,794	1.66%	58,537	1.79%
UNITED	2,079,226	59.05%	2,058,540	58.10%	1,910,018	58.32%
US AIRWAYS	82,310	2.34%	84,759	2.39%	69,533	2.12%
VANGUARD AIRLINES	25,345	0.72%	20,179	0.57%	42,201	1.29%
TOTALS	3,520,865	100.00%	3,543,247	100.00%	3,275,167	100.00%

(1) 2001 Revised.

(2) 2000 Revised.

DOMESTIC MARKET SHARE
AUGUST 2001



**DENVER INTERNATIONAL AIRPORT
TOTAL OPERATIONS AND TRAFFIC
AUGUST 2001**

	AUGUST					YEAR TO DATE				
	2001	2000 (9)	INCR./ DECR.	% INCR./ DECR.	% OF GRAND TOTAL 2001	2001	2000 (9)	INCR./ DECR.	% INCR./ DECR.	% OF GRAND TOTAL 2001
OPERATIONS (1)										
Air Carrier	34,205	32,564	1,641	5.0%	69.9%	252,606	247,357	5,249	2.1%	70.1%
Air Taxi	12,902	12,820	82	0.6%	26.4%	96,748	94,421	2,327	2.5%	26.8%
Military	106	121	(15)	-12.4%	0.2%	631	636	(5)	-0.8%	0.2%
General Aviation	1,701	1,588	113	7.1%	3.5%	10,407	10,474	(67)	-0.6%	2.9%
TOTAL	48,914	47,093	1,821	3.9%	100.0%	360,392	352,888	7,504	2.1%	100.0%
PASSENGERS (2)										
Internationals (3)										
In	35,185	38,617	(3,432)	-8.9%		292,373	309,596	(17,223)	-5.6%	
Out	32,804	37,593	(4,789)	-12.7%		286,193	307,250	(21,057)	-6.9%	
TOTAL	67,989	76,210	(8,221)	-10.8%	1.8%	578,566	616,846	(38,280)	-6.2%	2.2%
Majors (4)										
In	1,493,542	1,382,596	110,946	8.0%		10,483,799	10,530,875	(47,076)	-0.4%	
Out	1,485,412	1,387,126	98,286	7.1%		10,467,901	10,565,422	(97,521)	-0.9%	
TOTAL	2,978,954	2,769,722	209,232	7.6%	78.9%	20,951,700	21,096,297	(144,597)	-0.7%	78.7%
Nationals (5)										
In	287,814	286,929	885	0.3%		2,046,364	1,987,324	59,040	3.0%	
Out	287,370	279,305	8,065	2.9%		2,056,988	1,984,346	72,642	3.7%	
TOTAL	575,184	566,234	8,950	1.6%	15.2%	4,103,352	3,971,670	131,682	3.3%	15.4%
Regionals (6)										
In	37,465	34,846	2,619	7.5%		242,752	247,477	(4,725)	-1.9%	
Out	37,407	35,020	2,387	6.8%		245,776	247,264	(1,488)	-0.6%	
TOTAL	74,872	69,866	5,006	7.2%	2.0%	488,528	494,741	(6,213)	-1.3%	1.8%
Supplementals (7)										
In	38,405	18,699	19,706	105.4%		244,405	133,622	110,783	82.9%	
Out	38,842	18,801	20,041	106.6%		244,162	133,464	110,698	82.9%	
TOTAL	77,247	37,500	39,747	106.0%	2.0%	488,567	267,086	221,481	82.9%	1.8%
GRAND TOTAL PASSENGERS	3,774,246	3,519,532	254,714	7.2%	100.0%	26,610,713	26,446,640	164,073	0.6%	100.0%
CARGO BY TYPE (LBS) (8)										
AIR MAIL										
In	11,502,143	15,808,550	(4,306,407)	-27.2%		103,855,864	125,248,963	(21,393,099)	-17.1%	
Out	10,146,517	13,880,536	(3,734,019)	-26.9%		93,044,538	113,812,952	(20,768,414)	-18.2%	
TOTAL	21,648,660	29,689,086	(8,040,426)	-27.1%	30.9%	196,900,402	239,061,915	(42,161,513)	-17.6%	34.5%
FREIGHT & EXPRESS										
In	26,591,700	32,966,792	(6,375,092)	-19.3%		198,579,180	239,915,587	(41,336,407)	-17.2%	
Out	21,921,068	28,418,235	(6,497,167)	-22.9%		175,080,799	217,842,240	(42,761,441)	-19.6%	
TOTAL	48,512,768	61,385,027	(12,872,259)	-21.0%	69.1%	373,659,979	457,757,827	(84,097,848)	-18.4%	65.5%
CARGO BY CARRIER										
CARGO	41,490,368	54,152,059	(12,661,691)	-23.4%	59.1%	327,405,652	390,142,234	(62,736,582)	-16.1%	57.4%
PASSENGER	28,671,060	36,922,054	(8,250,994)	-22.3%	40.9%	243,154,729	306,677,508	(63,522,779)	-20.7%	42.6%
GRAND TOTAL CARGO	70,161,428	91,074,113	(20,912,685)	-23.0%	100.0%	570,560,381	696,819,742	(126,259,361)	-18.1%	100.0%

- (1) An aircraft operation is either a landing or takeoff or contact with the control tower (as reported by FAA).
(2) Revenue and non revenue passengers as reported by the individual airlines.
(3) Air BC, Air Canada, Allegro, Apple Vacations, British Airways, Champion Int'l, Mexicana, and Ryan Int'l Airlines.
(4) America West, American, Continental, Delta, Northwest, TWA, United, and US Airways.
(5) Air Wisconsin/UAX, Frontier, Midwest Express, and Vanguard.
(6) Big Sky Airlines, Great Lakes/UAX, Mesa, and SkyWest/UAX.
(7) American Int'l Airways, American Trans Air, Casino, Champion Air, Miami, Ryan Int'l Airlines Sun Country and Sun West.
(8) For Detail see Attached Cargo Report.
(9) 2000 revised.

DENVER INTERNATIONAL AIRPORT
TOTAL PASSENGERS BY AIRLINE

AUGUST 2001

AIRLINE (1)	AUGUST				YEAR TO DATE					
	2001 (2)	2000 (3)	INCREASE/	%	MKT SHARE		MKT SHARE		INCREASE/	%
			DECREASE	INCR./	2001 (2)	2000 (3)	2000 (3)	DECREASE	INCR./	
AIR CANADA	13,841	27,189	(13,348)	-49.1%	116,849	0.44%	161,004	0.61%	(44,155)	-27.4%
AIR WISCONSIN/UAX	211,987	202,938	9,049	4.5%	1,518,073	5.70%	1,609,360	6.09%	(91,287)	-5.7%
AIR BC	9,923	9,623	300	3.1%	81,416	0.31%	67,932	0.26%	13,484	19.8%
ALLEGRO	10,005	9,672	333	3.4%	107,297	0.40%	78,300	0.30%	28,997	37.0%
AMERICA WEST	59,453	45,169	14,284	31.6%	414,060	1.56%	299,209	1.13%	114,851	38.4%
AMERICAN	181,818	175,704	6,114	3.5%	1,244,546	4.68%	1,096,775	4.15%	147,771	13.5%
AMERICAN TRANS AIR	35,907	27,937	7,970	28.5%	249,714	0.94%	183,545	0.69%	66,169	36.1%
APPLE VACATIONS	0	0	0	0.0%	4,051	0.02%	7,915	0.03%	(3,864)	-48.8%
BIG SKY AIRLINES	1,916	1,389	527	37.9%	12,873	0.05%	9,357	0.04%	3,516	37.6%
BRITISH AIRWAYS	12,919	20,808	(7,889)	-37.9%	100,303	0.38%	147,031	0.56%	(46,728)	-31.8%
CASINO	553	662	(109)	-16.5%	2,866	0.01%	4,888	0.02%	(2,022)	-41.4%
CHAMPION AIR	9,047	8,787	260	3.0%	78,292	0.29%	67,719	0.26%	10,573	15.6%
CHAMPION AIR INT'L	2,615	2,893	(278)	-9.6%	42,272	0.16%	37,891	0.14%	4,381	11.6%
CONTINENTAL	105,952	95,905	10,047	10.5%	708,215	2.66%	689,347	2.61%	18,868	2.7%
DELTA	172,068	198,835	(26,767)	-13.5%	1,241,062	4.66%	1,337,920	5.06%	(96,858)	-7.2%
FRONTIER AIRLINES	310,351	310,782	(431)	-0.1%	2,279,038	8.56%	2,001,041	7.57%	277,997	13.9%
GREAT LAKES/UAX	72,956	67,710	5,246	7.7%	475,318	1.79%	480,910	1.82%	(5,592)	-1.2%
JET BLUE	9,018	0	0	100.0%	30,509	0.11%	0	0.00%	30,509	100.0%
LUFTHANSA	13,393	0	13,393	100.0%	69,933	0.26%	0	0.00%	69,933	100.0%
MESA	0	767	(767)	-100.0%	337	0.00%	4,474	0.02%	(4,137)	-92.5%
MEXICANA	5,293	6,025	(732)	-12.1%	56,445	0.21%	52,578	0.20%	3,867	7.4%
MIAMI AIRLINES	154	114	40	35.1%	2,304	0.01%	4,015	0.02%	(1,711)	-42.6%
MIDWAY AIRLINES	8,384	0	8,384	100.0%	50,471	0.19%	0	0.00%	50,471	100.0%
MIDWEST EXPRESS	9,461	9,569	(108)	-1.1%	60,161	0.23%	51,294	0.19%	8,867	17.3%
MISCELLANEOUS	0	0	0	0.0%	1,527	0.01%	0	0.00%	1,527	100.0%
NORTHWEST	115,350	106,276	9,074	8.5%	705,508	2.65%	672,991	2.54%	32,517	4.8%
SKYWEST/UAX	31,172	0	31,172	100.0%	150,812	0.57%	0	0.00%	150,812	100.0%
SUN COUNTRY	264	0	264	100.0%	598	0.00%	224	0.00%	374	167.0%
SPORTS HAWK	150	0	150	100.0%	1,526	0.01%	0	0.00%	1,526	100.0%
SUN WEST	0	0	0	0.0%	928	0.00%	428	0.00%	500	116.8%
TWA	53,704	59,988	(6,284)	-10.5%	364,003	1.37%	384,239	1.45%	(20,236)	-5.3%
UNITED	2,205,642	2,016,222	189,420	9.4%	15,727,804	59.10%	16,187,844	61.21%	(460,040)	-2.8%
US AIRWAYS	84,967	71,623	13,344	18.6%	546,502	2.05%	427,972	1.62%	118,530	27.7%
VANGUARD AIRLINES	25,983	42,945	(16,962)	-39.5%	165,100	0.62%	309,975	1.17%	(144,875)	-46.7%
TOTALS	3,774,246	3,519,532	254,714	7.2%	26,610,713	100.00%	26,446,640	100.00%	164,073	0.6%
DEPLANED PASSENGERS	1,892,411	1,761,687	130,724	7.4%	13,309,693		13,208,894		100,799	0.8%
ENPLANED PASSENGERS	1,881,835	1,757,845	123,990	7.1%	13,301,020		13,237,746		63,274	0.5%
TOTAL PASSENGERS	3,774,246	3,519,532	254,714	7.2%	26,610,713		26,446,640		164,073	0.6%

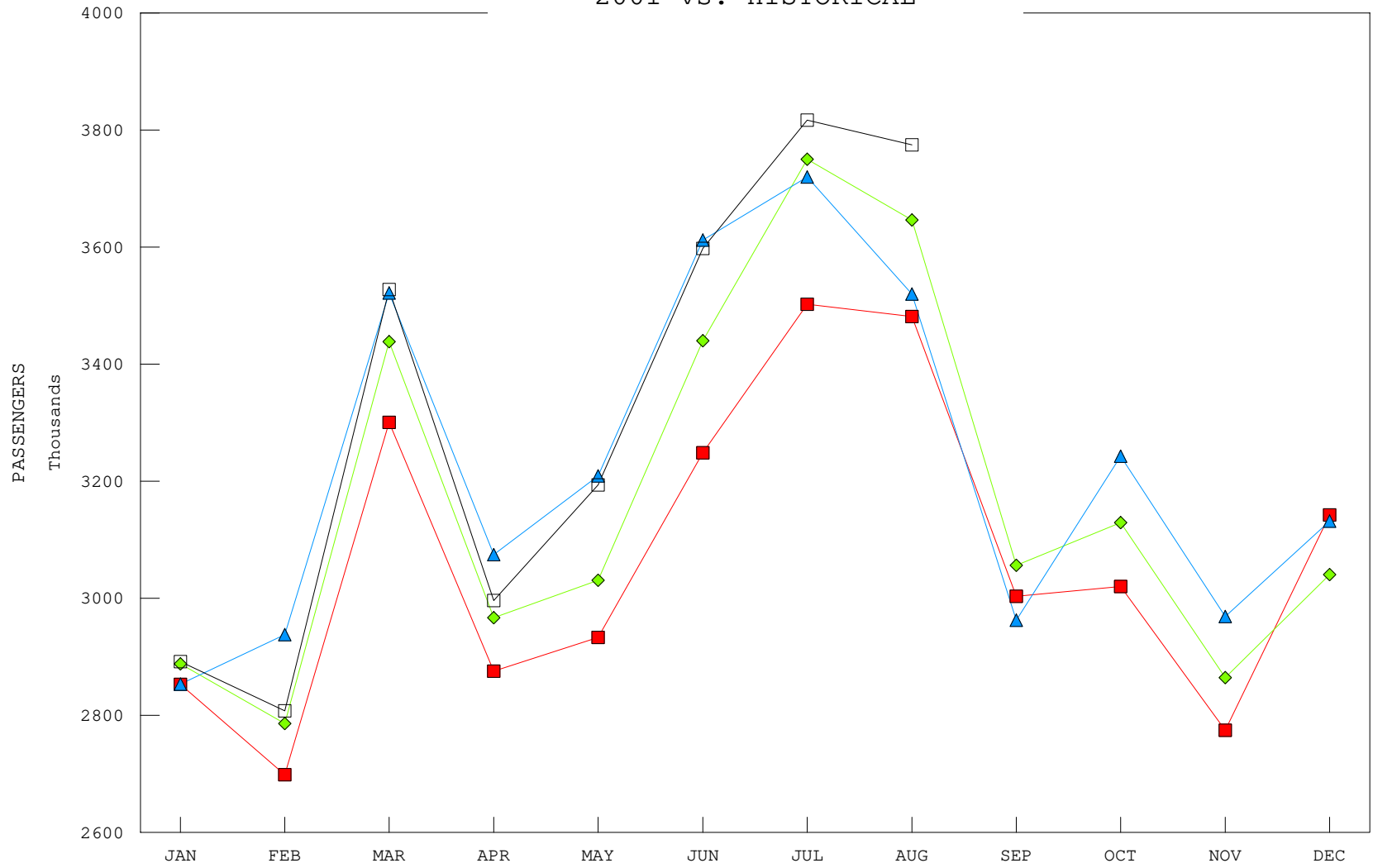
(1) Passenger totals represent revenue and nonrevenue passengers as reported by the individual airlines.

(2) 2001 revised.

(3) 2000 revised.

Note : Miscellaneous consists of North American Airlines, SportsJet, Sky King, and Boeing.

TOTAL PASSENGER BY MONTH 2001 vs. HISTORICAL



■ 1998 ◆ 1999 ▲ 2000 □ 2001