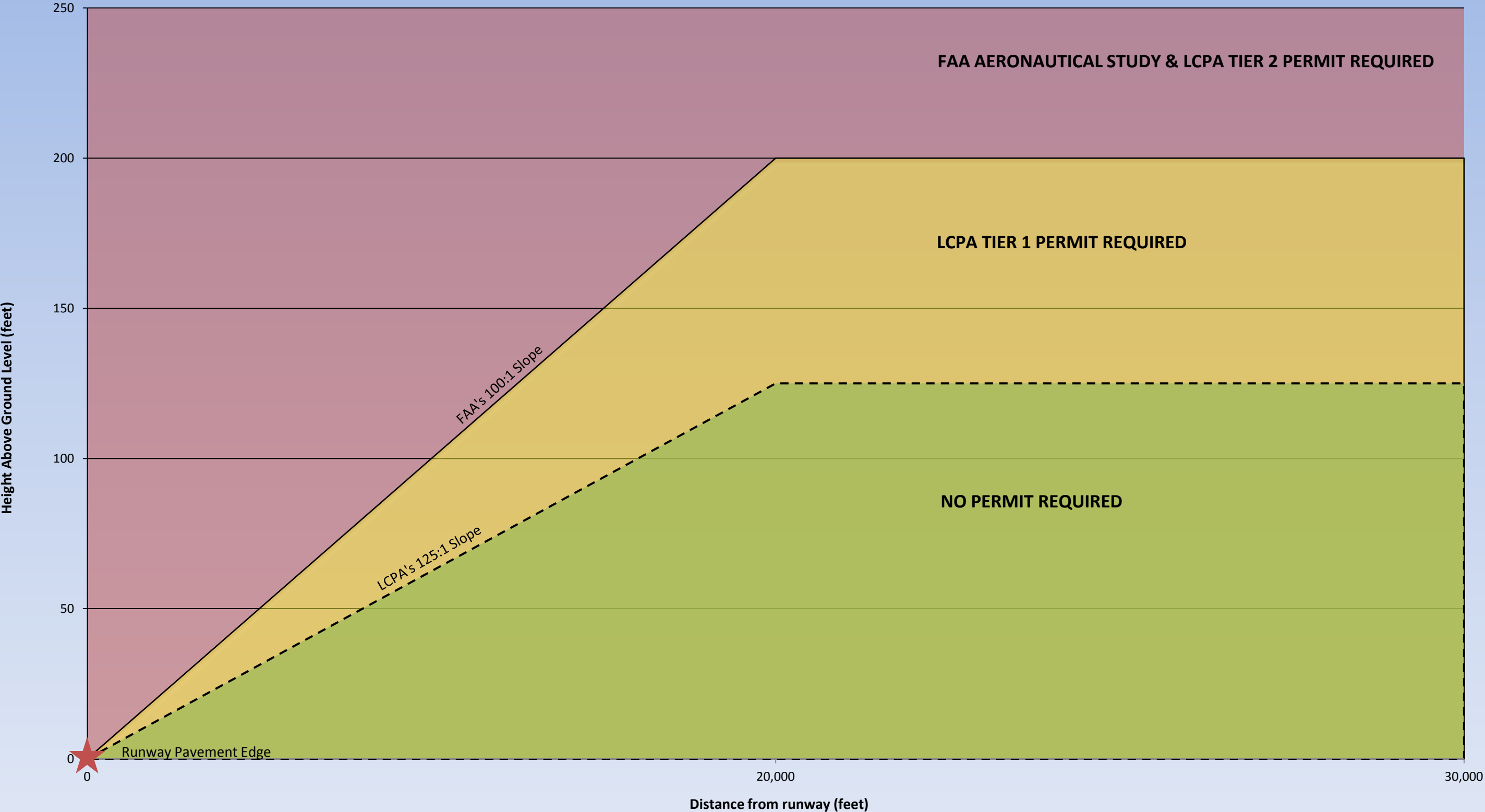
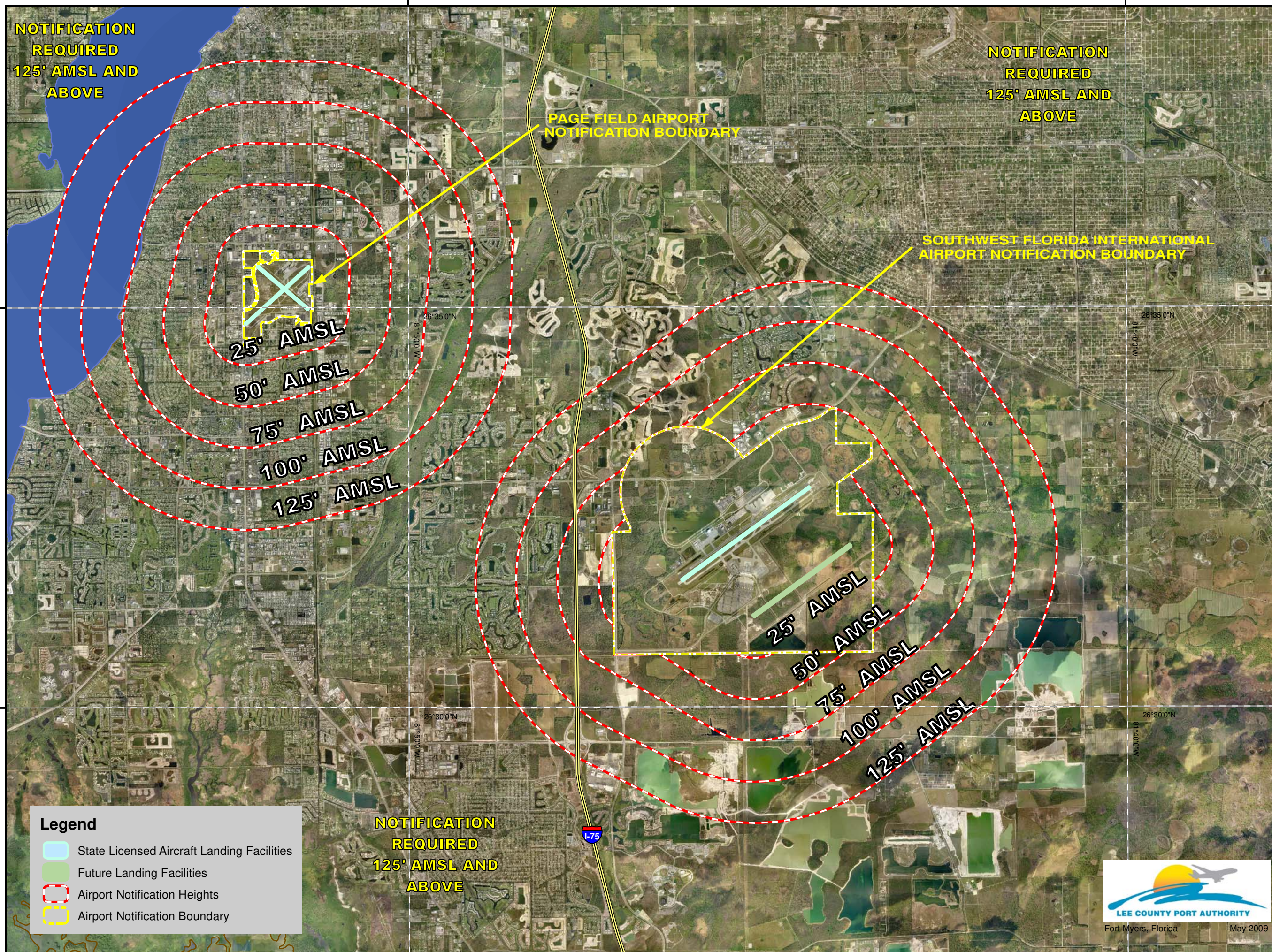


# Imaginary Notification Surfaces for Lee County and the Federal Aviation Administration





# AIRSPACE NOTIFICATION MAP

This map was developed by the Lee County Port Authority pursuant to Lee County Land Development Code, Section 34-1008, to assist the Department of Community Development in determining whether a proposed or existing object or piece of equipment to be used during the construction of an object would require an airspace review by Lee County Port Authority through submittal of a Tall Structures Review Application.

**Use of this map is limited to** notification procedures only and is in no way intended to authorize or suggest allowable object heights. Any other use of this map is done without the knowledge, concurrence or approval of Lee County Port Authority.

## Instructions for Use

Step 1 Determine location of proposed object on the map surface.

Step 2 *If the proposed project is located within the Page Field or Southwest Florida International Airport Notification Boundary go to Step 9a; otherwise continue to Step 3.*

Step 3 Determine the proposed object's max. height Above Mean Sea Level (AMSL = height of object + ground elevation) then go to Step 4.

Step 4 Determine if the proposed object will use a crane or similar equipment during construction.

Step 5 If the proposed object will use a crane, go to Step 6, if it will not use a crane, go to Step 7.

Step 6 Determine the crane's operating height AMSL.

Step 7 Determine if proposed object or crane heights AMSL exceed any of the notification heights for the selected area.

Step 8 If proposed object or crane exceeds the notification heights, go to Step 9a, otherwise go to Step 9b.

Step 9a Submit a Tall Structure Review Application to Lee County Port Authority

Step 9b Notification is not required



May 2009