

Development Land For Sale Or Joint Venture

The Present Zoning: RMF-Multiple Family Residential [Allows]

- 1. Single-Family Homes**
- 2. Duplexes**
- 3. Apartments**
- 4. Townhouses**



Call Waymon About a
Joint Venture
863-287-5981

Tri-Plexes



Single Family Homs



Townhouse



Apartments



Magnificent



Dependable Income Stream

Apartments better than the Stock Market, lower risk, yields better returns, and offers greater diversification.



Come see this alluring development property approved for **Apartments Townhouses/Single-family Homes and more.** You will be captivated by its panoramic view overlooking Lake Marie from top of the Ridge of Dundee. The land gradually slopes toward the lake guaranteeing apartment owners will have a magnificent obsession living on this unique property. We are told location is critical to a community value and this unique property meets that criteria plus much more. It's a short distance to **Disney World**, yet far enough to make it quite from noisy highway traffic. This quaint small town is filled with neighbors who know each other and enjoy community activities together. Come see, come buy before it is too late. **Owner financing or will JV the project.**

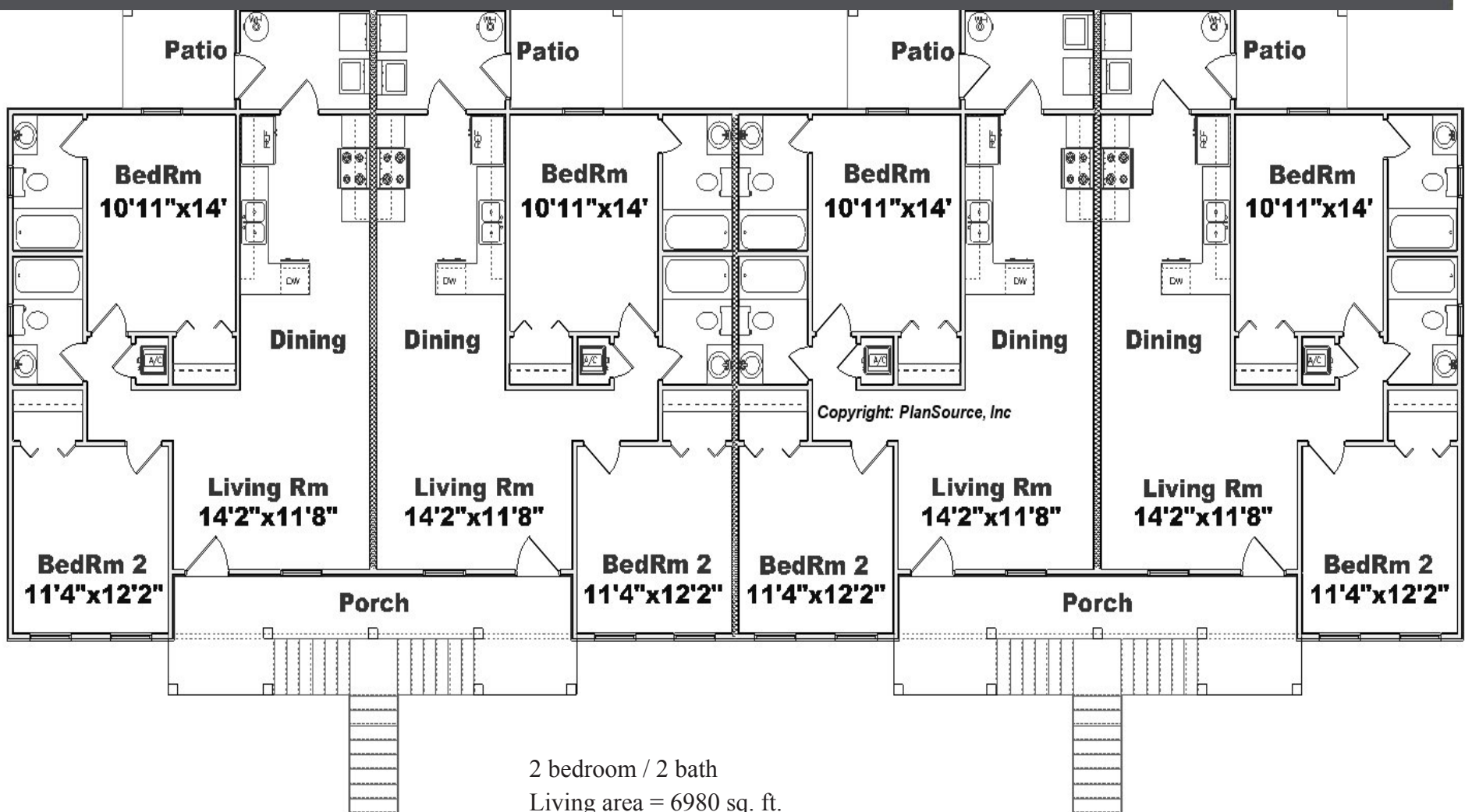


MLS # K 4900731

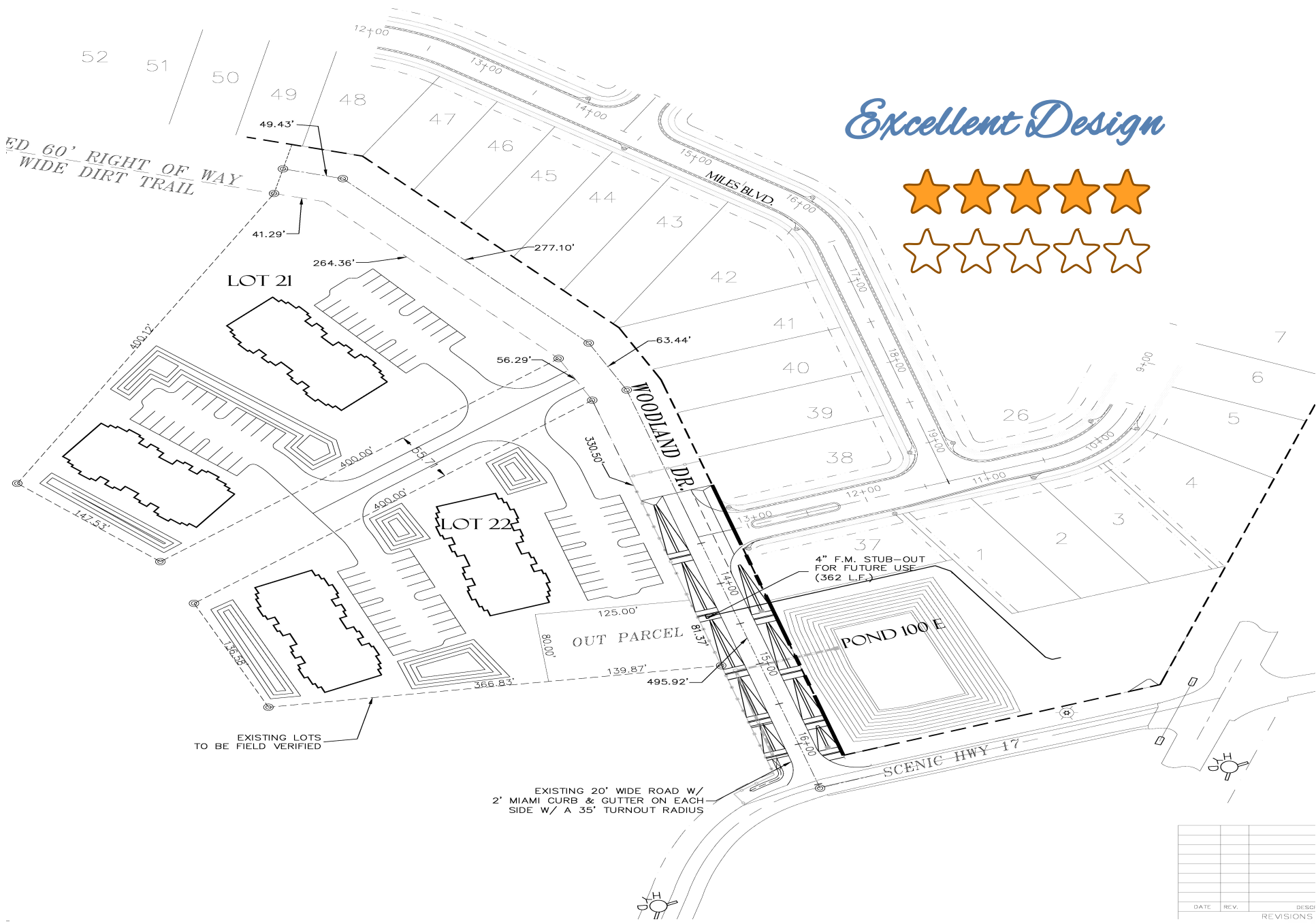


Waymon Ellis Meadows - Real Estate Broker and Builder
404 Ridgewood Avenue - Dundee, Florida 33838
Phone: 863-287-5981 - Email: BigW1937@aol.com - www.WaymonMeadowsRealEstate.com

*Information is believed to
true but not guaranteed.*



2 bedroom / 2 bath
 Living area = 6980 sq. ft.
 Other = 464 sq. ft.
 Total = 7444 sq. ft.
 Living area per unit: ~872 sq. ft.



Excellent Design



BUILD YOUR DREAM

Lake Marie Blvd. Dundee, FL 33838

RMF Zoning
4.68 Acres
Public Water
Public Sewer

