



RE 4 Fan Owner's Manual



Reel EFX, Inc.
5539 Riverton Ave.
North Hollywood, CA 91601
Phone: (818) 762-1710
Fax: (818) 762-1734

Features:

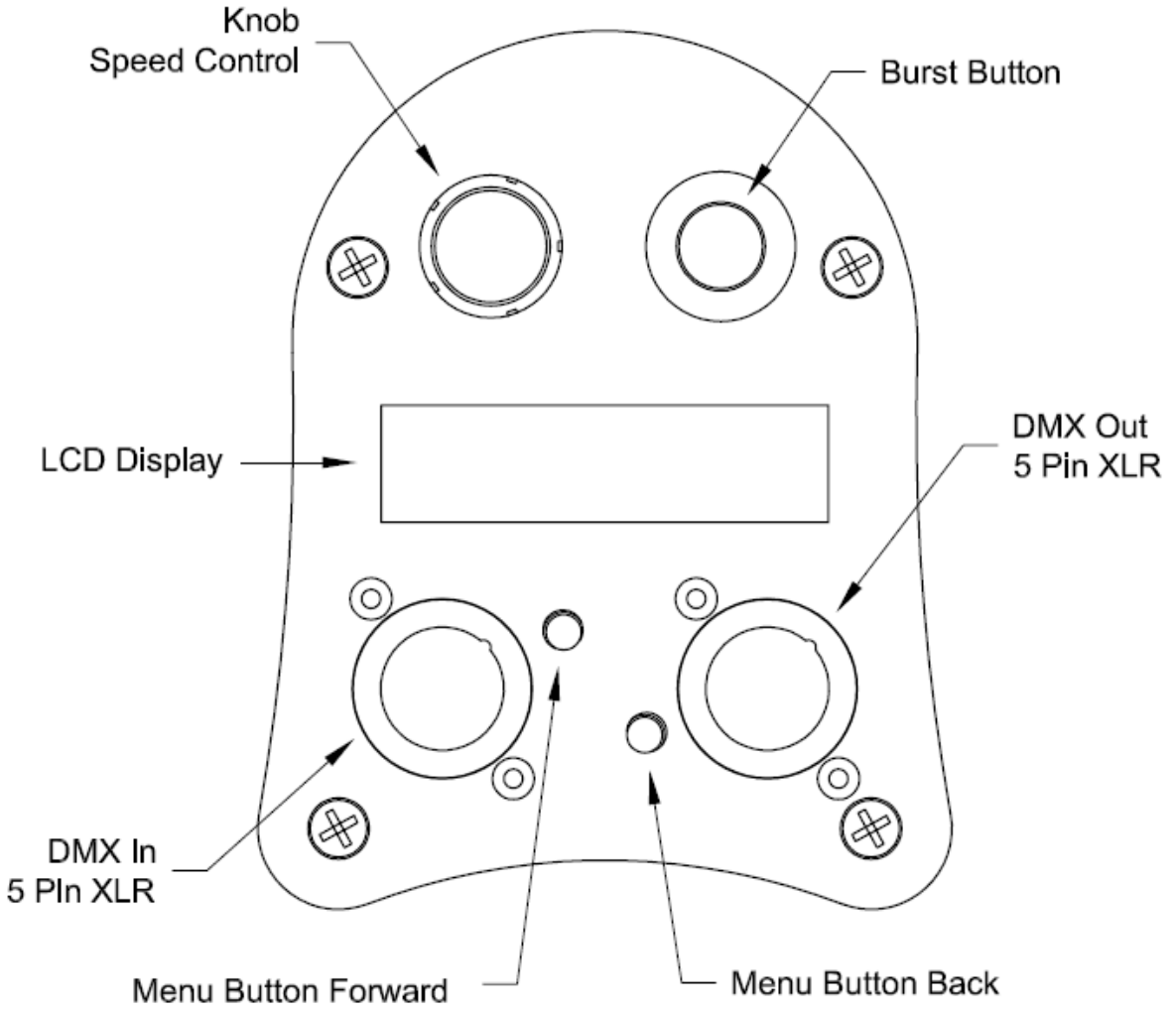
- **Universal Voltage input 100 – 240 VAC**
- **Active Power Factor Correction (0.99 pf at Max Load)**
- **Silent Smart Switching eliminates drive noise at low rpm**
- **Performance Improvements**
 - **Faster Responding Control System**
 - **70% More Wind Power Output than original RE3**
 - **Active brake to stop blades at zero speed**
- **Eco Friendly RoHs Compliant Construction**

Specifications:

- **Input Ratings**
 - **Voltage: 100-240 V~**
 - **Current: 18A MAX @ 117V~ 60Hz**
 - **Phase: single**
 - **Max Power: 2100 Watts**
 - **Frequency: 50/60Hz**

- **Motor: 2 HP Baldor® Premium Efficient 3 Phase**
- **Full Speed: 1700 RPM 33MPH @1 yd**
- **Speed Control: Solid State Variable Frequency Drive**
 - **active Silent Smart Switching**
 - **active Power Factor Correction**
- **DMX Control: USITT Compliant DMX 512 w/5 Pin XLR**
- **Mounting: Steel Floor Stand with Spud Mount**
- **Blades: 9 Blades 16” diameter**
- **Dimensions: Body size 22” x 24” Roto Molded High Impact Plastic**
- **Weight: 54 lbs.**
- **Grill: Front and rear flow enhancing Impact Resistant Nylon Grills**
- **Warranty: One Year Parts and Labor**

Control Panel



Operation and Safety

Introduction

The RE 4 is designed specifically for professional studio, stage, location, and theme park applications where maximum wind at the lowest possible noise level is required.

Advanced aerodynamics, a 2 horsepower motor, and a sophisticated solid state drive combine to create wind in excess of 33 mph at 1 meter. Combined with a rotary molded housing, composite blade assembly and integrated DMX interface makes the RE4 the quietest, lightest, most powerful, and versatile special effects fan available.

Operation

The RE 4 can draw up to 18 Amps @ 117V~ at full power and should be connected to a 20 Amp service for Maximum performance. Extension cords, when required, should be a 12/3 heavy-duty type.

Local control is for general operation of the fan speed using a knob on the control panel. The burst button provides immediate bursts to 100% when held down and also provides a pause and resume function when tapped quickly.

DMX mode is for remote operation of fan speed using a DMX lighting console. Control panel provides input and pass-through DMX 5 Pin XLR connectors.

The modes of operation are accessed by using the two small push buttons and the speed control knob. The (>) button takes you to the mode selection menu, the current operating mode will be blinking. Pressing the (>) button again will save the selection and returns to the selected operating mode. Pressing the (<) button will exit the mode selection menu without changing the current operating mode.

Safety

The RE 4 Fan is extremely powerful in relation to its size and the following precautions should be followed to avoid damage or injury.

- Suction at the fan inlet is extremely strong at full power. Loose particles, dirt, etc. can be ingested and expelled at high velocity.
- Loose clothing, hair, cables, and rope should be properly restrained to avoid being ingested.
- When mounting the fan on a Junior or similar stand, be sure to sand bag appropriately to avoid blow over.

DMX INTERFACE

Description

The DMX interface is fully USITT 1990 compliant, featuring an address range of 1-512 and industry-standard 5-pin XLR connectors. The DMX input is short-circuit protected and will accept voltage up to 120VAC without damaging the interface.

Operation

The RE 4 Fan uses a single address to provide proportional motor control. Level 0 is off and 255 full power. To operate the fan using DMX, the DMX operation mode must be selected and the address set to the desired value. When a valid DMX signal is detected, the decoded level will be displayed on the LCD display.

Addressing

To set the address, the fan must be in DMX mode. Press the (>) button twice, you will see the set screen. The first character will be underlined. The underlined character can be changed, using the speed control knob. Change digits using the (>) or (<) and set the desired address. A final press of the (>) button will save the selection and exit to the DMX display screen.

Trouble-shooting

The control panel display will show the status of the incoming DMX signal and can be used to determine problems.

- **DMX Lost** The DMX signal has been interrupted or corrupted for more than 1 second.
- **DMX Error** The DMX Controller is set to an address not supported by the console.
- **Level.....** No DMX signal present.

Termination

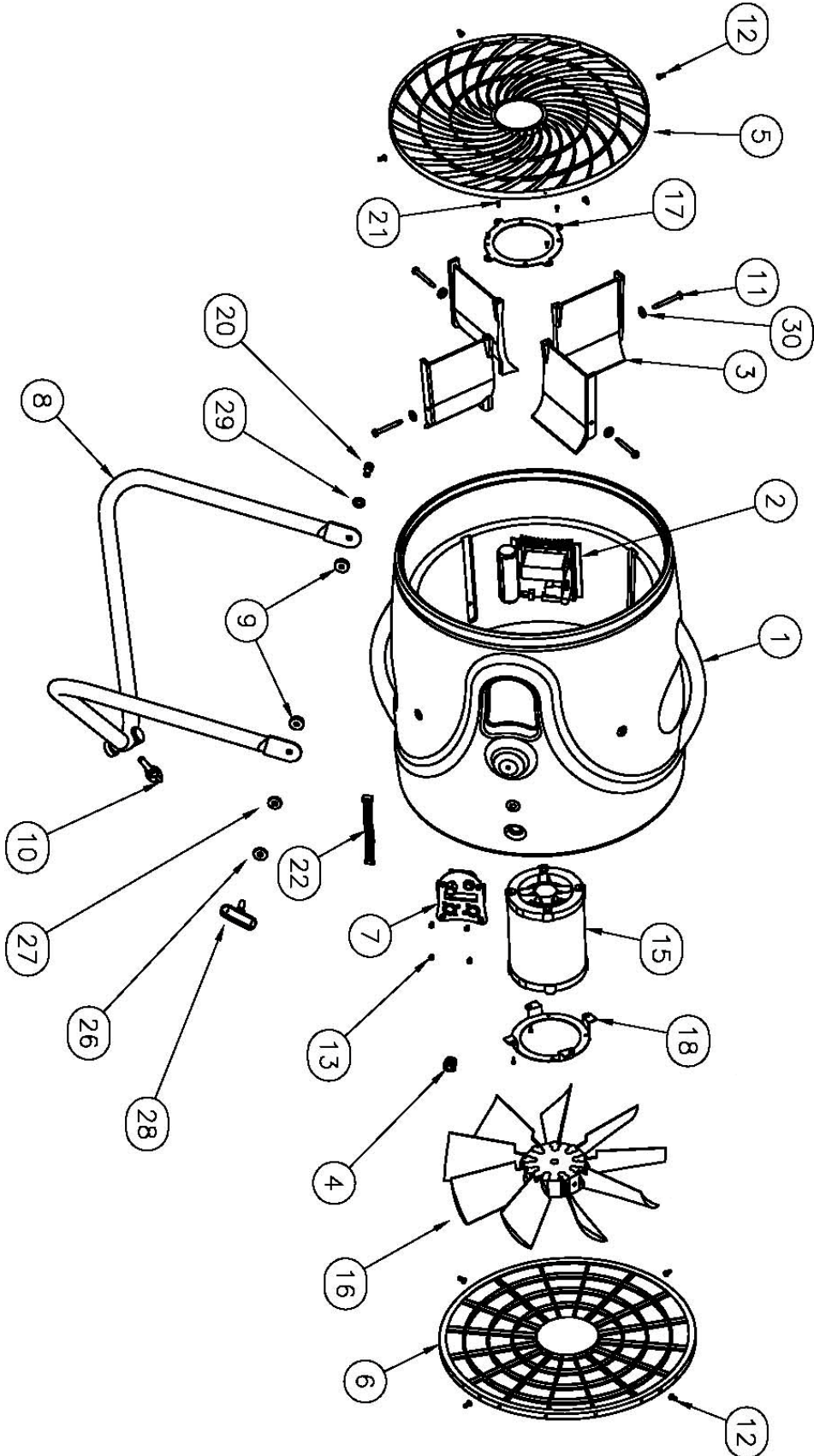
The last device on the DMX line should be properly terminated to prevent signal reflections and possible corruption of data. A standard DMX terminating plug containing a 120ohm – ½-watt resistor placed across pins 2 & 3 is recommended.

XLR Pin out

- Pin 1 DMX512 common
- Pin 2 Data-
- Pin 3 Data+
- Pin 4 & 5 Not used (passed through)

PARTS LIST

RE 4 ASSEMBLY		
<u>ITEM</u>	<u>QTY</u>	<u>DESCRIPTION</u>
1	1	Fan body
2	1	Speed control
3	4	Stator
4	1	Strain relief
5	1	Front grill
6	1	Rear grill
7	1	Control panel
8	1	Triangular stand
9	2	Leather washer
10	1	Tee handle (5/16-NC)
11	4	Stator screw
12	8	Front/rear grill screw
13	4	Control panel screw
14		
15	1	2 HP motor
16	1	Blade assembly
17	1	Front motor mount
18	1	Rear motor mount
19		
20	1	3/8-NC x 1/2 cap screw
21		
22	1	Speed-control data cable
23		
24		
25		
26	1	Nylon washer
27	1	Thrust bearing assembly
28	1	Tee handle (black)
29	1	3/8 flat washer
30	4	Washer A



REEL EFX PRODUCTS



DF-50 Diffusion Hazer



RE II Turbo Fan



RE 4 Fan



Air Puppet Fan



Digital DMX-controlled Fan



Diffusion in a Can

Reel EFX was founded in 1982 to address the special effects needs of commercial and film production companies. Reel EFX provides the following services:

- 1) **Manufacturing and Development** of industry-leading equipment for sale through a worldwide distribution network.
- 2) **Design and fabrication of mechanical, atmospheric and physical effects** for film and television. These include pyrotechnic, flying, wind, rain, snow, fog, remote-control, pneumatics, hydraulics, automobile effects, Digital Multicam and specialty props.